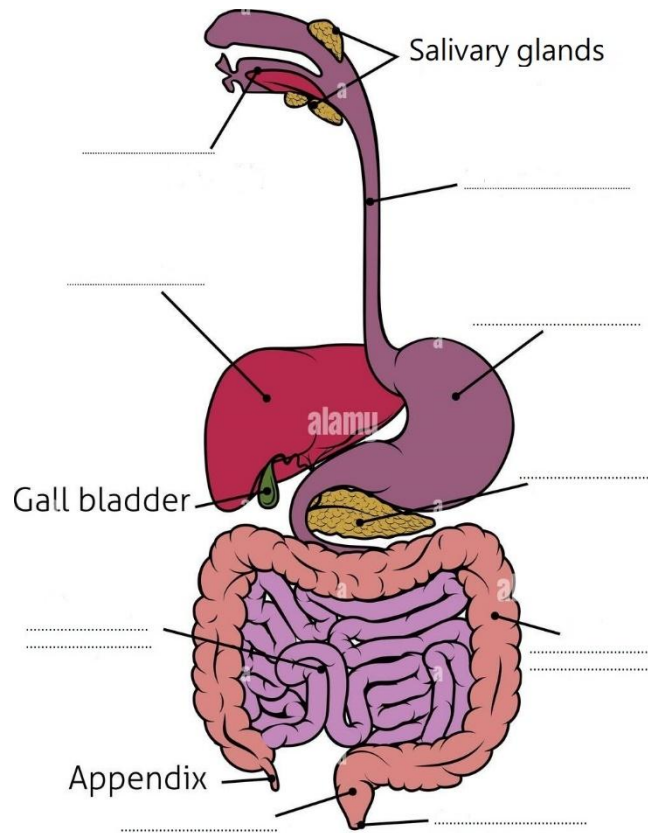


SCIENCE TEST-THE DIGESTIVE APPARATUS (CLIL)

1) WRITE THE NAME OF THE ORGANS OF THE DIGESTIVE APPARATUS



2) COMPLETE THE TEXT WITH THE FOLLOWING WORDS:

**pancreas/anus/glands/insulin/mouth/ esophagus/bile/small**

The digestive apparatus is responsible for the ingestion, processing and absorption of food through digestion. It is made up of:

- a digestive tube made up of the ....., pharynx, ....., stomach and intestine (divided in ..... intestine and large intestine), rectum and .....
- A series of ..... The most important glands are: the liver, which produces the..... and the....., that produces.....

3) TRASLATE THE FOLLOWING WORDS

From English to Italian From Italian to English

TONGUE.....

MASTICARE.....

STOOL.....

MUSCOLO.....

4) ANSWER THE FOLLING QUESTIONS

- What does the digestive apparatus do?

A. Pumps blood throughout the body  
B. Turns the food into nutrients and energy  
C. Helps your arms and legs to move

- Where does the digestive process start?

A. In the mouth                      B. In the esophagus                      C. In the stomach

- How much saliva do we produce in a day?

A. About 150 ml                      B. About 1,5 l                      C. About 5 l

- Which is the name of the tube that carries food from the mouth to the stomach?

A. Anus                      B. Esophagus                      C. Liver

- How long is an adult's small intestine?

A. About 20 cm                      B. About 2 m                      C. About 6 m

- How long is an adult's large intestine?

A. About 20 cm                      B. About 2 m                      C. About 6 m

- Which organ stores swallowed food and liquid, mixes up digestive juices with the food and liquid and sends it to the small intestine?

A. Mouth                      B. Large intestine                      C. Stomach

- Which of the following is the term that refers to the movement of food through the digestive apparatus?

A. Peristalsis                      B. Ingestion                      C. Defecation

- Where is the duodenum?

A. In the mouth                      B. in the small intestine                      C. In the pancreas